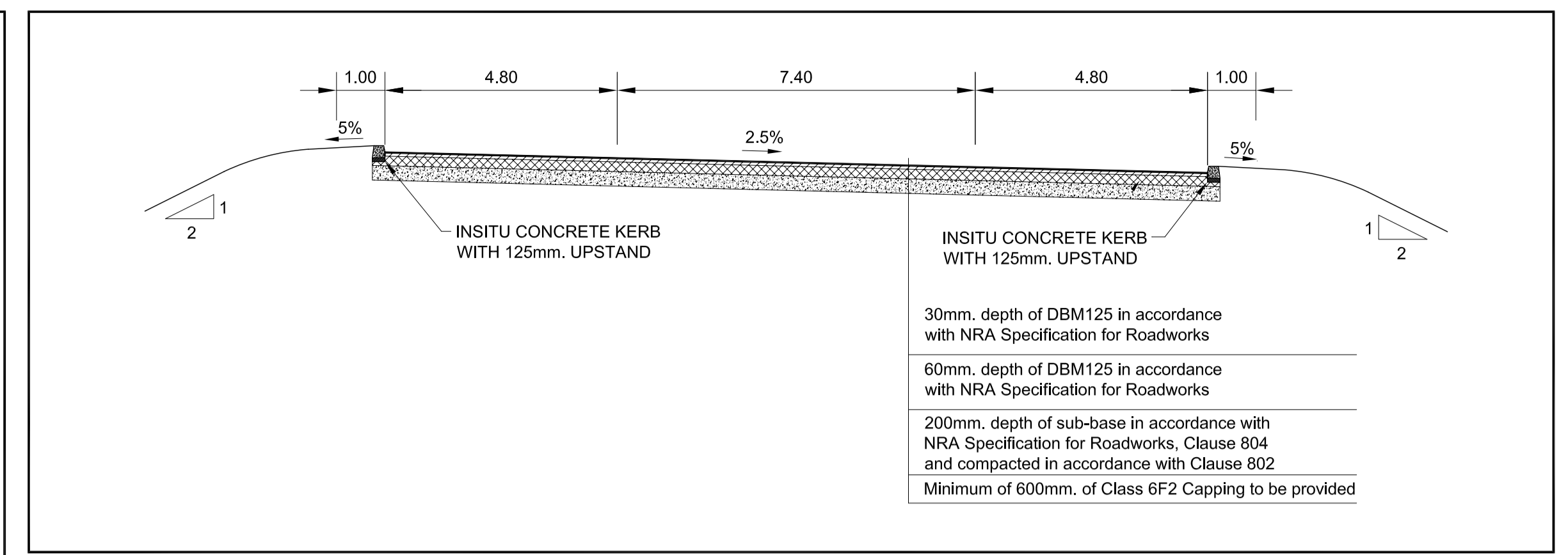
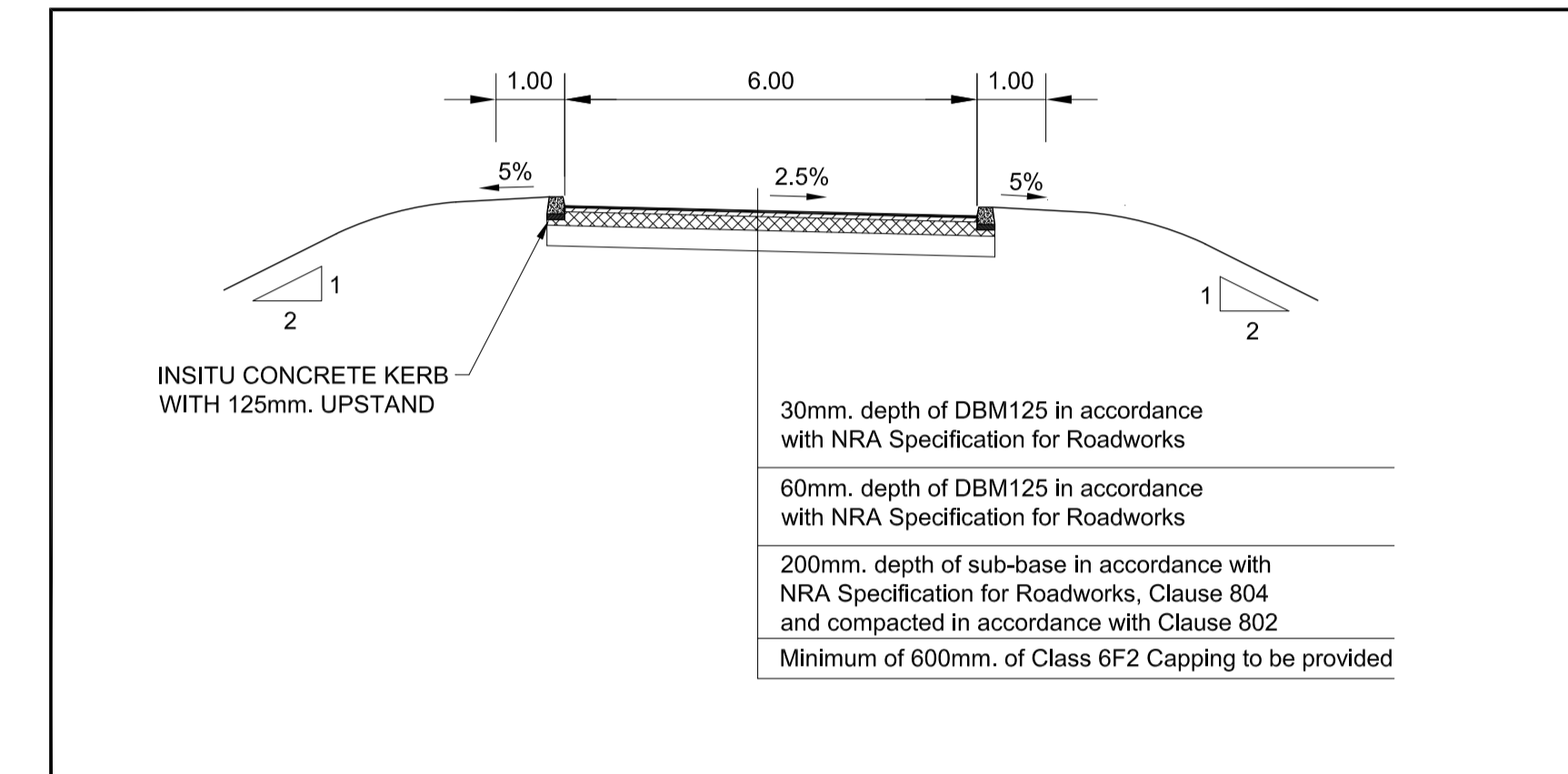


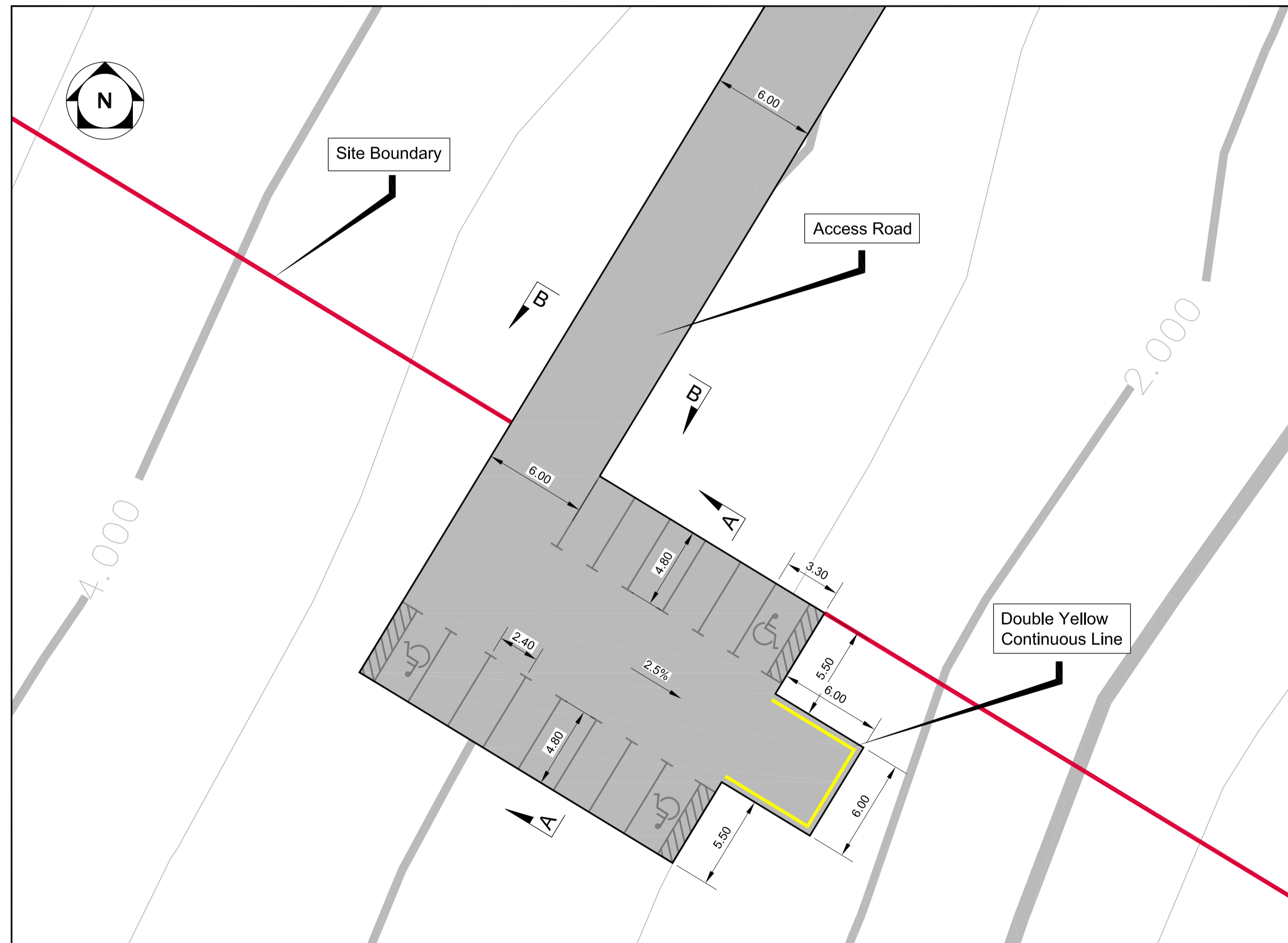
NEW SEA EMBANKMENT TYPICAL SECTION
Scale 1:500 @ A1



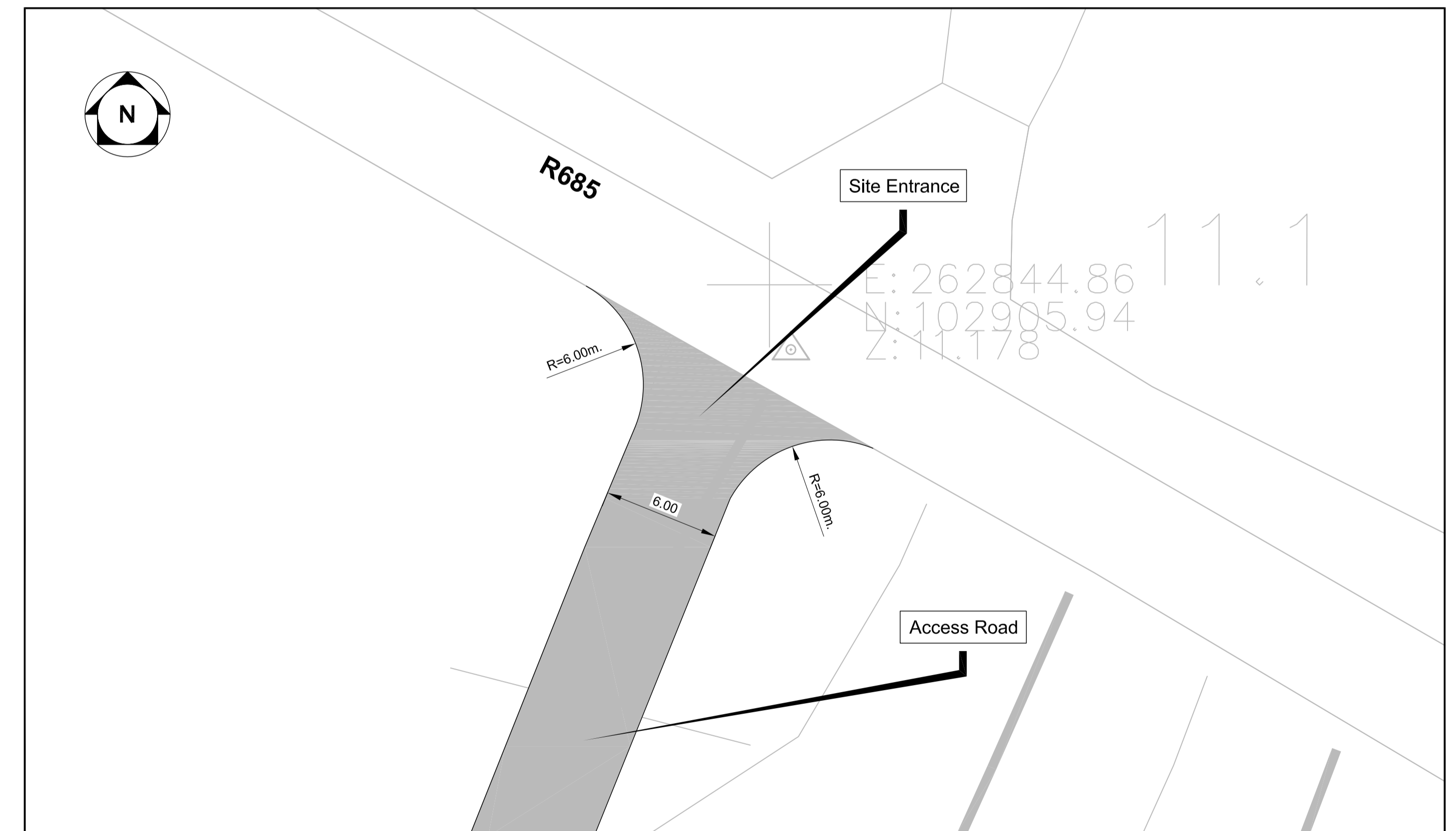
PRELIMINARY DESIGN CAR PARK DETAIL SECTION A-A
Scale 1:100 @ A1



PRELIMINARY DESIGN ACCESS ROAD DETAIL SECTION B-B
Scale 1:100 @ A1



CAR PARK DETAIL
Scale 1:200 @ A1



ENTRANCE TO ACCESS ROAD DETAIL
Scale 1:200 @ A1

NOTES

- This drawing is the property of RPS. It is a confidential document and must not be copied, used, or its content divulged without prior written consent.
- All Levels refer to Ordnance Survey Datum, Malin Head.
- DO NOT SCALE, use figured dimensions only, if in doubt ask.

No.	Date	Drawn By	Checked By	Amendment / Issue	App
P01	Dec. '09	RH	EB	Issue for Planning	EB

Client			
WATERFORD COUNTY COUNCIL Comhairle Chontae Phort Láirge Civic Offices, Dunganavin, Co. Waterford Phone: 058 22000 Fax: 058 42911			
Drawn By	Checked By	Approved By	Date
RH	EB	EB	Dec. 2009

RPS		West Pier Business Campus Dun Laoghaire Co. Dublin	
T	+353 1 4882900	F	+353 1 2835676
W	www.rpsgroup.com/ireland	E	ireland@rpsgroup.com
Project	Creation of Compensatory Wetlands at Kilmaclegue West, Tramore, Co. Waterford		
Drawing Status	Planning	Scale / Sheet Size	As shown @ A1
NTS @ A3		NTS @ A3	

Drawing Number	Rev
MDR0584/DG0106	P01
Title	
TYPICAL DETAILS & SECTIONS	